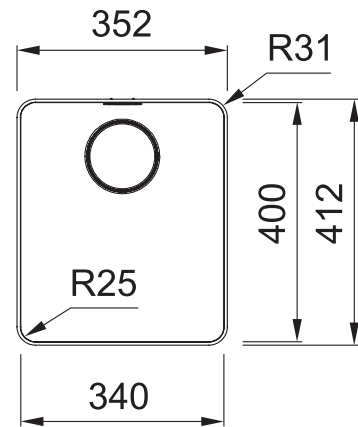


MYTHOS

MYX210-34FPC

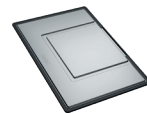


PRODUCT INFORMATION

| | |
|-------------------------|--------------------------------------|
| Installation | Topmount/Flushmount |
| Dimensions | 352 x 412mm |
| Cabinet Base | 450mm |
| Bowl Size | 340 x 400 x 200mm/27L |
| Bowl Radius | 25mm |
| Cut-Out Size | See Installation Document |
| Cut-Out Template | No |
| Waste Outlet | Semi Integrated Waste |
| Overflow | Yes |
| Tap Holes | No |
| Remote Waste | Yes (35mm hole required in benchtop) |
| Finish | Stainless Steel |
| Warranty | 50 Years |

ACCESSORIES

— Included Accessory
- - - Available Accessory



DT288
Extension Drainer



RM081
Rollamat



PB835
Push Button Waste



CBP082
Chopping Board



SB398
Strainer Bowl

NOTE: Cut-out dimensions are a guide only, please use the actual sink as your template.

FEATURES & BENEFITS



Food Preparation Centre



18/10 Stainless Steel



Push Button Remote Waste



Hidden Overflow



Sound Deadening Pads

BARE SINK OPTION AND SOME SINK & TAP PACKAGES DO NOT INCLUDE ACCESSORIES. PLEASE CHAT TO YOUR SALES CONSULTANT FOR FURTHER INFORMATION.

LAST UPDATED: 21 SEPTEMBER 2021

FRANKE