

# D55MH56N0B

## 52 CM FULLY INTEGRATED RANGEHOOD



C



The integrated rangehood: offers a sleek and seamless design in the kitchen with fully integrated installation.

- ✓ Extraction rate: at 650 m<sup>3</sup>/h, it quickly ensures optimal kitchen air quality.
- ✓ LED lighting: for perfect, energy-efficient illumination of the cooktop.
- ✓ Intensive speed setting with reset: automatically resets the hood to regular speed setting after 6 min.

### Features

#### Technical Data

Typology : Traditional  
 Approval certificates : , CE, VDE  
 Length electrical supply cord (cm) : 150  
 Required niche size for installation (HxWxD) : 418mm x 496mm x 264mm  
 Net weight (kg) : 8.0  
 Type of control : Electronic  
 Maximum output air extraction (m<sup>3</sup>/h) : 570  
 Boost position output recirculating (m<sup>3</sup>/h) : 290  
 Maximum output recirculating air (m<sup>3</sup>/h) : 280  
 Boost position air extraction (m<sup>3</sup>/h) : 650  
 Number of lights : 2  
 Noise level (dB) : 67  
 Diameter of air outlet (mm) : 120 / 150  
 Grease filter material : Washable aluminium  
 Odour filter : No  
 Operating Mode : Convertible  
 Optional accessories : Z5135X1, Z5135X3, Z54TR00X0, Z54TR60X3  
 Type of lamps used : LED  
 Total power of the lamps (W) : 2  
 Grease filter type : Kasette  
 Connection Rating (W) : 277  
 Current (A) : 3  
 Voltage (V) : 220-240  
 Frequency (Hz) : 50  
 Plug type : GB plug  
 Installation typology : Built-in  
 Material body : Stainless steel  
 Approval certificates : , CE, VDE  
 Plug type : GB plug  
 Dimensions of the product, with chimney (if exists) (in) : / x x  
 Dimensions of the packed product (in) : 19.88 x 23.81 x 14.37  
 Net weight (lbs) : 19  
 Gross weight (lbs) : 25  
 Motor location : Integrated motor in hood body  
 No-return airflow flap : Yes  
 Length electrical supply cord (cm) : 150  
 Dimensions of the product, with chimney (if exists) (mm) : 418 x 520 x 300  
 Net weight (kg) : 8.0  
 Gross weight (kg) : 11.0



4 242004 187745

### Optional accessories

Z5135X1 Active carbon filter  
 Z5135X3 Recirculating kit

# D55MH56NOB

## 52 CM FULLY INTEGRATED RANGEHOOD

### Features

#### Design & Innovation

- For installation in a kitchen cabinet
- Appliance colour: Stainless steel
- Rim ventilation
- metal grease filters with stainless steel cover

#### Power and Mode of Operation

- Electronic controls
- Push button controls (3 power levels plus intensive setting) with Electronic display
- Extraction rate according to EN 61591  $\varnothing$  15 cm:  
max. Normal use 570 m<sup>3</sup>/h  
Intensive 650 m<sup>3</sup>/h
- Noise min./max. Normal Level: 53/67 dB  
Noise max. Intensive setting: 70 dB
- Suitable for ducted extraction and recirculation
- Accessories required for recirculated extraction: Recirculating kit

#### Comfort & Convenience

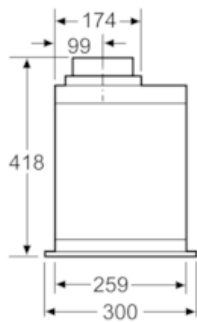
- Automatic intensive revert setting - 6 min
- Noise level according to EN 60704-3 und EN 60704-2-13 exhaust air:  
Max. normal use: 67 dB(A) re 1 pW (53 dB(A) re 20  $\mu$ Pa sound pressure)  
Intensive: 70 dB(A) re 1 pW (56 dB(A) re 20  $\mu$ Pa sound pressure)
- Twin channel high performance fan motor
- 2 x 1 Watt LED lights
- Dishwasher safe metal grease filters

#### Technical Information

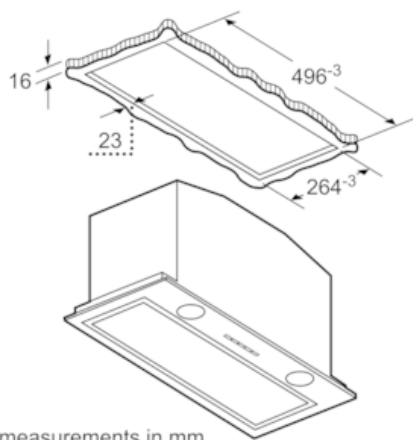
- Built-in dimensions: width: 50 cm, depth: 26 cm
- Dimensions exhaust air (HxWxD): 418-418 x 520 x 300 mm
- 120 or 150 mm tube connection diameter
- Power rating: 277 W
- Average Energy Consumption: 107.7 kWh/year
- Electrical cable length 1.5 m

D55MH56NOB  
52 CM FULLY INTEGRATED RANGEHOOD

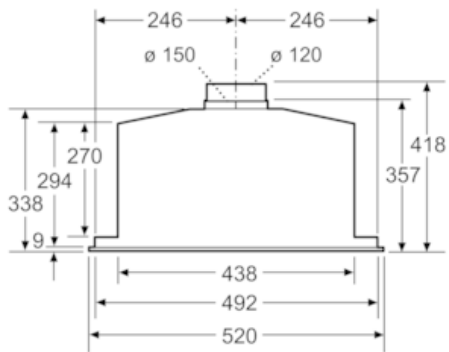
Dimensioned drawings



measurements in mm



measurements in mm



measurements in mm